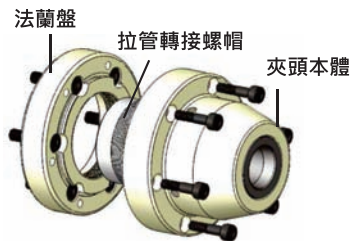


## 前推式筒夾夾頭-美規5C/16C

### 5C/16C CPD DEAD-LENGTH COLLET CHUCK FOR 5C/16C COLLET

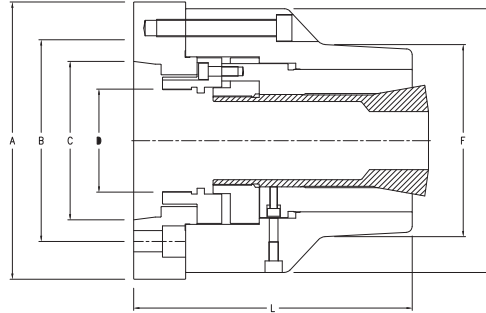
- ◎ 搭配美規5C/16C筒夾工作
- ◎ 5C筒夾最大徑26mm
- ◎ 16C筒夾最大夾徑40mm
- ◎ 滑套前推夾緊·工件軸向不位移

Adops 5C / 16C collets.  
5C Collet: max. capacity 26mm.  
16C Collet: max. capacity 40mm.



CPD筒夾夾頭出廠時隨附一只半加工的拉管轉接螺帽·客戶可以依照機床主軸現有的拉管尺寸加工拉管螺帽  
NTH offers a blank drawnut when shipping the chuck. Customers could thread the drawnut according to the drawtube of the machine.

## CPD筒夾夾頭尺寸與規格



型號 / Model	CPD-5CA5	CPD-5CA6	CPD-16CA5	CPD-16CA6
主軸鼻端 Spindle nose	A2-5	A2-6	A2-5	A2-6
A	138 (5.43")	158 (6.22")	138 (5.43")	158 (6.22")
B (P.C.D.)	104.8 (4.13")	133.4 (5.25")	104.8 (4.13")	133.4 (5.25")
C	82.6 (3.25")	106.4 (4.19")	82.6 (3.25")	106.4 (4.19")
D 轉接拉管 Draw tube thread	M73 x P1.5	M73 x P1.5	M91 x P1.5	M91 x P1.5
E	100 (3.94")	100 (3.94")	138 (5.43")	138 (5.43")
F	78 (3.07")	78 (3.07")	90 (3.54")	90 (3.54")
L	123 (4.84")	125 (4.92")	145 (5.71")	148 (5.83")
安裝螺絲 Screw	6H-M10	6H-M12	6H-M10	6H-M12
工作筒夾 Collet	5C筒夾 (最大夾26mm)	5C筒夾 (最大夾26mm)	16C筒夾 (最大夾40mm)	16C筒夾 (最大夾40mm)
拉管允許推力 Max. Pull force	1800kgf (3900lbf)	1800kgf (3900lbf)	2300kgf (5060lbf)	2300kgf (5060lbf)
最高轉速 Max RPM	6000	6000	5000	5000
產品淨重 N. W	8.0kgs (17.6lbs)	9.0kgs (19.8lbs)	10.0kgs (22lbs)	12.0kgs (26.4lbs)

## 後拉式筒夾夾頭-美規5C/16C

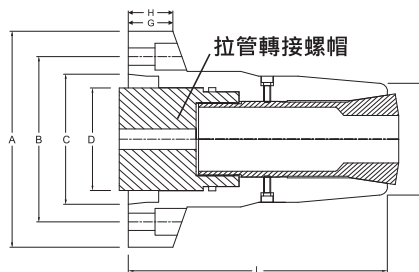
### 5C/16C CPB PULL BACK COLLET CHUCK

- ◎ 搭配美規5C/16C筒夾工作
- ◎ 5C筒夾最大徑26mm
- ◎ 16C筒夾最大夾徑40mm
- ◎ 滑套後拉夾緊·夾持精度高

Adops 5C / 16C collets.  
5C Collet: max. capacity 26mm.  
16C Collet: max. capacity 40mm.  
Pull back design. High accuracy.



## CPB筒夾夾頭尺寸與規格



CPB筒夾夾頭出廠時隨附一只半加工的拉管轉接螺帽·客戶可以依照機床主軸現有的拉管尺寸加工拉管螺帽

型號 / Model	CPB-5CA5	CPB-5CA6	CPB-16CA5	CPB-16CA6
主軸鼻端 Spindle nose	A2-5	A2-6	A2-5	A2-6
A	137 (5.39")	166 (6.54")	137 (5.39")	166 (6.54")
B (P.C.D.)	104.8 (4.13")	133.4 (5.25")	104.8 (4.13")	133.4 (5.25")
C	82.6 (3.25")	106.4 (4.19")	82.6 (3.25")	106.4 (4.19")
D 轉接拉管 Draw tube thread	最大/Max. M58	最大/Max. M65	最大/Max. M58	最大/Max. M65
F	60 (2.36")	60 (2.36")	80 (3.15")	80 (3.15")
L	122 (4.80")	122 (4.80")	145 (5.71")	145 (5.71")
G	24.547	26.641	24.547	26.641
H	31	35	31	35
安裝螺絲 Screw	3H-M10	3H-M12	6H-M10	6H-M12
工作筒夾 Collet	5C筒夾 (Collet)	5C筒夾 (Collet)	16C筒夾 (Collet)	16C筒夾 (Collet)
拉管允許拉力	1800kgf (3900lbf)	1800kgf (3900lbf)	2300kgf (5060lbf)	2300kgf (5060lbf)
最高轉速 Max RPM	6000	6000	5000	5000
產品淨重 N. W	5.0kgs (11.0lbs)	7.5kgs (16.5lbs)	5.5kgs (12.1lbs)	10.0kgs (22.0lbs)